

WallisAnnenberg
Center for the
Performing Arts

Paul Crewes
Artistic Director

Rachel Fine
Managing Director

GROW @ The Wallis

A SPACE FOR ARTS EDUCATION

PRESENTS

THE WALLIS YOUTH THEATER COMPANY production of

THEBES

BY

Gareth Jandrell

After Sophocles, Aeschylus

FEATURING

Trecey Dory, Malakai Jones, Jayde Kief, Samantha Marino, Kelvin Morales,
Clementine Turner, Jordan Rodriguez, Alexander Sheldon

PRODUCTION DESIGN

Madeleine Dahm

SET REALIZATION

Jeanne Schniedewind

LIGHTING DESIGN

Bosco Flanagan

SOUND DESIGN

Gillian Moon

STAGE MANAGER

Geoffrey Stirling

DIRECTED BY

Madeleine Dahm

JUNE 10 - 11, 2017

Bram Goldsmith Theater

Running Time: 90 minutes with no intermission.

Gareth Jandrell first adapted Thebes for The Faction. Thebes received its world premiere January 9, 2014 at The New Diorama Theatre, London. Thebes is published by Bloomsbury Methuen Drama, Bloomsbury Publishing PLC.

The Wallis Youth Theater Company is one of many GROW @ The Wallis education and outreach programs. GROW @ The Wallis is made possible by a generous grant from GROW Annenberg Foundation/Regina & Gregory Annenberg Weingarten, with additional leadership support from Arline and Buddy Pepp, and The Wasserman Foundation.



CAST OF CHARACTERS

TRECEY DORY.....OEDIPUS (KING OF THEBES)
ALEXANDER SHELDON.....CREON (BROTHER OF JOCASTA, ADVISOR TO OEDIPUS)
JORDAN RODRIGUEZ.....TIRESIUS (A PROPHET OF THEBES) / ETEOCLES (SON OF OEDIPUS)
JAYDE KIEF.....JOCASTA (QUEEN OF THEBES, SISTER OF CREON) / ONE
KELVIN MORALES.....HAEMON (SON OF CREON) / MESSENGER
MALAIKAI JONES.....POLYNICES (SON OF OEDIPUS AND JOCASTA) / HERDSMAN
CLEMENTINE TURNER.....ISMENE (DAUGHTER OF OEDIPUS) / MEGAREUS (SON OF CREON)
SAMANTHA MARINO.....ANTIGONE (DAUGHTER OF OEDIPUS)
THE COMPANY.....THE CHORUS – CITIZENS OF THEBES

FIGHT COACHES: Alex Sheldon and Celina Surniak

DIRECTOR'S STATEMENT

I mean, what is Thebes? A theocracy? No. A meritocracy? Certainly not. A monarchy? Kind of. A patriarchy? Less and less so. Thebes is many things, and to revolutionize that? Well, how?

From Oedipus to Antigone, the story of *Thebes* remains a fascinating exploration of fate, morality and chaos, two and a half thousand years after the saga was originally written. Gareth Jandrell's contemporary version weaves together Sophocles and Aeschylus to present the full, visceral and bloody account of the Oedipus dynasty.

In this re-imagining of the Greek classic, Jandrell focuses on the political corruption of Thebes. Ravaged, bereft and superstitious, its citizens place their fate in the hands of an elite family dynasty — from the doomed Oedipus and Jocasta, to their sons Eteocles and Polynices, and finally the power-hungry Creon.

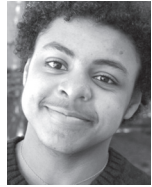
In adding to Jandrell's contemporary vision for *Thebes*, we have chosen to set the play in a climate-changed future — as natural resources disappear and plunge the city further into chaos, the wealthy ruling class fight amongst themselves as they try to maintain power — only the steadfast morality of Antigone can inspire the citizens of Thebes not only to stand together, but to revolutionize their democracy.

— Madeleine Dahm



TRECEY DORY is happy to be a part of The Wallis Youth Theatre Company. He is a recent graduate of Cortines High School for the Performing Arts. He was a regional finalist of the August Wilson Monologue

Competition and most recently performed with Whittier Community Theatre. He hopes that by being a part of this company, he can help spread a message of love and equity among people, no matter their creed, religion, skin color etc...



MALAKAI JONES is thrilled to be a part of The Wallis Youth Theatre Company's first year. This company is filled with talented, warm, and like-minded individuals dedicated to bringing change through

their art. Malakai is a recent graduate of CHAMPS Charter High School's drama academy and is currently taking a gap year to focus on developing his craft and writing.



JAYDE KIEF has performed Shakespeare to Tennessee Williams, in DTASC and ESU Competitions, placing as a finalist. She is also the 2016-17 NAM California Teen

Spokesmodel and Actress title holder. As a classically trained actor, dancer and singer-poet, Jayde calls the Wallis Annenberg Center for Performing Arts her "artistic safe home." She was selected to perform her *mo.men.tum* solo for The Wallis Board of Directors, introducing Artistic Director, Paul Crewes, to the community. She was featured as *The Girl in the Green Dress* at the 2016 Wallis *WelcomeFest*. Jayde is a freshman at Glendale Community College, majoring in Theatre and Dance Teaching.



SAMANTHA MARINO began her dance training at the age of three and is now a student at El Camino College, studying English Literature. She was born in the Los Angeles area and has performed in local productions through community and school. Some credits include *Hairspray*, *Rumors*, *You Can't Take it With You* and *Lysistrata*. She plans to transfer to Cal State Long Beach in the fall, where she will continue to study writing and perform theatre. She'd like to thank Madeleine for allowing her this wonderful opportunity, and for teaching the cast to grow as active artists and individuals in the world.



KELVIN MORALES Ever since Kelvin Morales was young, he has been enthralled by story-telling of all mediums. He decided to start acting in his freshman year of high school and since then he has appeared

on numerous stages from Pasadena City College to Theatricum Botanicum. His road has lead him to The Wallis Youth Theatre Company where he hopes he can spread a message of peace and equality. He would like to thank his parents for allowing him to pursue his dreams.



ALEXANDER SHELDON is proud to be a part of The Wallis Youth Theatre Company in its inaugural year. As well as being an actor in the company, Alex also serves as their social media "wizard." In addition, Alex is a

company member at Will Geer's Theatricum Botanicum where he received his acting education. Though Shakespeare is his first love, he is also a film actor, mask maker, director, and pianist. Some of his favorite roles include The Trickster in *Word of Mouth*, Peretz in Theatricum's *Romeo and Juliet*, Ingolf in *The Tragic Overture* and Speed in Shakespeare's *Two Gentlemen of Verona*.



JORDAN RODRIGUEZ is a student at AMDA College & Conservatory of the Dramatic Arts for a BFA in Acting. While attending, she has had the fortune of being in a staged reading of *American Clock*, as

well as had several of her original plays performed and workshopped. She is honored to have been given the opportunity to be a part of The Wallis Youth Theatre Company, and would like to thank her friends and family, cast and director, and everyone else that had a hand in making this experience and production possible.



CLEMENTINE TURNER is a British actress who has spent the last two years here in Los Angeles, finishing high school and studying at the Lee Strasberg Theatre Institute. She has been working with The

Wallis for over a year now, performing in *The Intimidation Game* and *Work in Progress* with The Miracle Project. She has loved being a part of The Wallis Youth Theatre Company, and getting to work as an ensemble, with such an incredible group of individuals. Clementine will be studying theatre at NYU in the fall.

GARETH JANDRELL (Writer) is a British playwright and an Associate Writer for the theatre company The Faction. After graduating the M.A. Writing for Performance at Goldsmiths, Gareth's first full length play *Pure O* was performed at the Kings Head Theatre. Since then Gareth has gone on to adapt Lorca's *Blood Wedding*, Kafka's *Metamorphosis*, Goethe's *Faust* and *Thebes* after Sophocles and Aeschylus for The Faction - *Thebes* going on to be published by Bloomsbury/Methuen. He has been shortlisted for High Tide's Escalator Plays and Old Vic New Voices' Edinburgh Season and completed the Royal Court Studio Group. Gareth wrote *The Wonderful Discovery of Witches in the County of Lancaster* for Dawn State which was performed at the Pleasance Courtyard, and *Ratchet* which enjoyed a sold out run at the Soho Theatre. Gareth's play *Alkaline* was shortlisted for the Paptango Prize and his play *The Rub* was one of the winners of Bolton Octagon's Top 5 competition.

BOSCO FLANAGAN (Lighting Designer) is a multi-award winning lighting designer who has worked across the UK, Ireland and the US. He is the resident lighting designer for The Actors Gang, and just finished a tour of China and Italy with them. Bosco works extensively with Independent Shakespeare as well as other critically acclaimed theatre and dance companies in LA. Other lighting credits include: The Royal Shakespeare Company, The Grand Opera House (Dublin), The Royal Court Theatre (London), The New York and Edinburgh Fringe Festivals and touring with the late David Bowie, U2 and The Rolling Stones.

GILLIAN MOON (Sound Designer) is an interactive sound designer and thrilled to be designing at The Wallis. A proud alum from the CalArts Sound Design MFA program, her favorite productions include *Paradise by Design* (CalArts), *HamletMachine* (CalArts), *Leakages and Anticoagulants* (CalArts), *SciFest 2015* (ACME Theater Hollywood, Assistant Sound Design), and Universal Studios' *Halloween Horror Nights 2016* (Media Editor). She also does work in virtual reality and games, and has a passion for combining theater and games in a live environment. gillianmoon.com

JEANNE SCHEIDEWIND (Set Realization) loves everything artistic. She started out working for more than thirty years as a corporate interior designer, but with two daughters pursuing careers in the arts (theatre and dance), she switched gears in 2007 and began designing and sets and props for theatrical productions. Most recently Jeanne worked with Madeleine on the musical comedy *An Almost True Story: Oktoberfest The Musical*, produced by Ginger Perkins.

GEOFFREY STIRLING (Stage Manager) is a proud native of California and alumni of Cal State Northridge. Geoffrey works as a stage manager and production manager in Los Angeles. Most recent Credits: *Word of Mouth* at The Wallis, *The Drowsy Chaperone* at Valley Performing Arts, *Batboy - The Musical*, *Odilia*, *The Vagina Monologues*, *Little Shop of Horrors* and *Oktoberfest The Musical*.

MADELEINE DAHM (Director) is a British theater director, choreographer and arts activist whose critically acclaimed work have been presented across the U.K, Europe and U.S. She has been a Resident Artist at Grow @ The Wallis since 2015, and is the director of The Wallis Youth Theatre Company. Recent credits include: Director *Word of Mouth* at The Wallis, Lovelace Theatre; Director and Choreographer *An Almost True Story - Oktoberfest The Musical*, a new musical comedy by Emmy winning composer Harold Faltermeyer (*Top Gun*), and Disney's *Mulan* writer Philip LaZebnik (now heading to Vegas and China); Movement Director for Sussan Deyhim's *The House is Black*, a seminal work on Forough Farrokhzad (coming to The Wallis in 2018). Madeleine is the Rehearsal Supervisor and Coach for The Martha Graham Dance Company's *Panorama*, at Valley Performing Arts Center May 2017; she is the Dramaturgist and Director for the new staged play *Isn't it Rich* by

Victoria Looseleaf, and she is a Resident Director and co-founder of the Italian theatre collective BamEnsemble. Madeleine received her training at the Old Vic Theatre in London, and with legendary Martha Graham, she holds a post-graduate from Trinity Laban Conservatoire, is an Associate Member of the Stage Directors and Choreographers Society of America, and Founding Member of the British Association of Choreographers.

WALLIS YOUTH THEATER COMPANY Established in 2016, the Company seeks to cross boundaries and, with an ethos of collaboration, create thoughtful and provocative work that is rooted in examining our humanity. The Company provides a place for young actors to work as an ensemble, experience cutting edge creative practices, develop innovative and socially conscious work, and be engaged with the local community.

